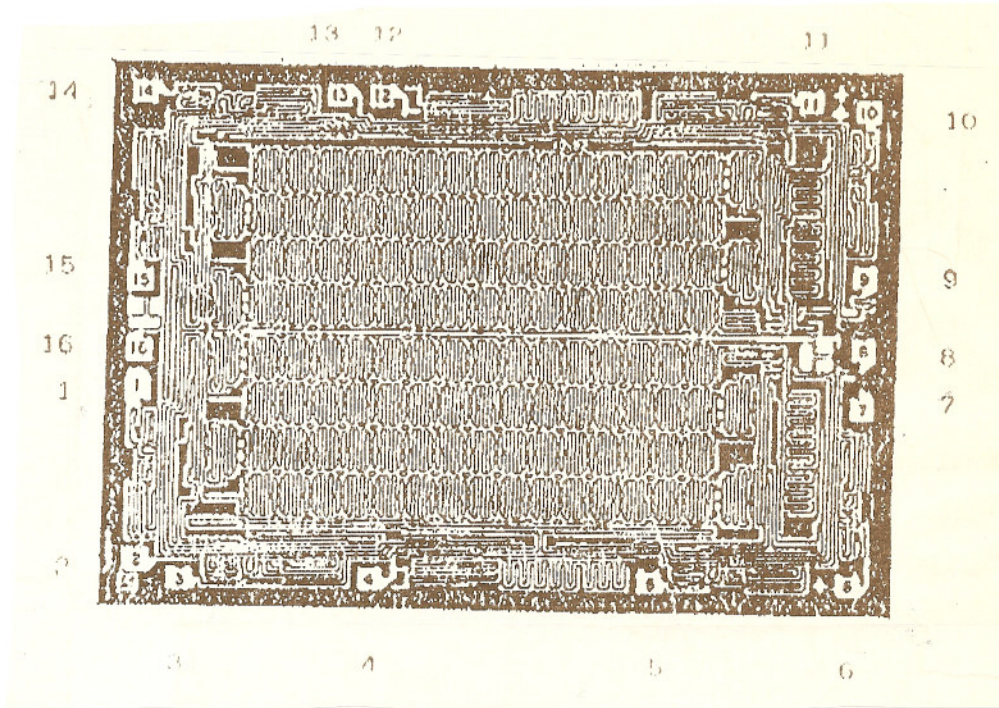




Sierra Components, Inc.

2222 Park Place • Suite 3E • Minden, Nevada 89423
 Phone: 775.783.4940 Fax: 775.783.4947

Chip back potential is the level which bulk silicon is maintained by on-chip connection, or it is the level to which the chip back must be connected when specifically stated below. If no potential is given the chip back should be isolated.



PAD NO	FUNCTIONS
1	Q16A
2	Q48A
3	WEA
4	CLA
5	Q6A
6	Q32A
7	DA
8	VSS
9	DB
10	Q32B
11	Q64B
12	CLB
13	WEA
14	Q48B
15	Q16B
16	VDD

Top Material:
Backside Material:
Bond Pad Size:
Backside Potential:
Mask Ref:

APPROVED BY:MG **DIE SIZE : 144 x 105** **DATE: 10/27/08**

MFG: R.C.A **THICKNESS:** **P/N: CD4157BH**